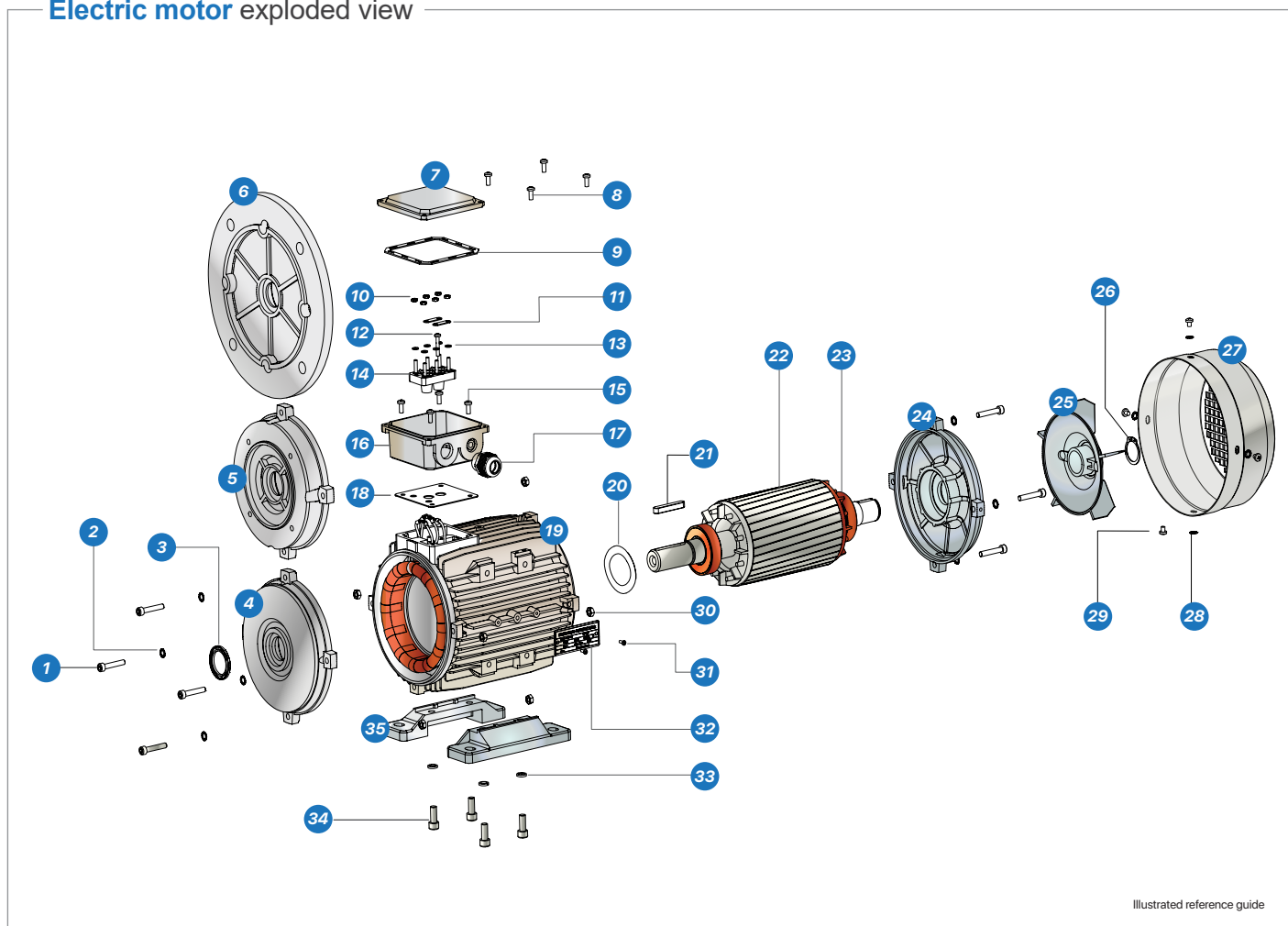


Electric motor exploded view



Illustrated reference guide

- | | | |
|--------------------------------------|--|------------------------------------|
| 1. Screw | 13. Terminal shim | 25. Cooling fan |
| 2. Washer | 14. Terminal board | 26. Fan circlip |
| 3. Oil seal | 15. Terminal box fixing screws | 27. Fan cover |
| 4. Front endshield | 16. Terminal block base | 28. Fan cover fixing shim |
| 5. B14 flange | 17. Cable gland | 29. Fan cover fixing screws |
| 6. B5 flange | 18. Terminal box bottom gasket | 30. Endshield fixing nut |
| 7. Terminal cover | 19. Motor frame | 31. Rivet |
| 8. Box cover fixing screws | 20. Preload washer | 32. Motor nameplate |
| 9. TB upper gasket | 21. Shaft key | 33. Foot fixing nut |
| 10. Terminal board fixing nut | 22. Rotor | 34. Foot fixing screws |
| 11. Terminal bridge | 23. Bearing | 35. Foot |
| 12. Terminal pin | 24. Non drive-end (NDE) endshield | |

Spare parts for motors

Spare parts for motors are available from our stocks and can be ordered (see below examples) as replacement parts for damaged components on the motor.

Example 1: Spare terminal box for **TC90** frame size, the ordering code is: **TC80/90/100TB**

Example 2: B5 flange for **TC250-2P** frame size, the ordering code is: **TC250-2PB5**

		TC80	TC90	TC100	TC112	TC132	TC160	TC180	TC200	TC225	TC250	TC280S	TC280M	TC315-2P	TC315-4/6P	TC355-2P	TC355-4/6P					
Auxiliary Box	AB	MS56																				
Terminal Box	TB	TC80/90/100			TC160/180			TC250/280S			TC315			TC355								
Terminal Block	TBL	TC80/90/100			TC112/132			TC160/180			TC200/225			TC250/280S			TC315			TC355		
Rubber Seal	RS	TC80/90/100			TC112/132			TC160/180			TC200/225			TC250/280S			TC315			TC355		
Plastic Fan	PF	T1C80	T1C90	T1C100	T1C112	T1C132	T1C160	T1C180	T1C200	T1C225	T1C250	T1C280		T1C315/355-4P			T1C355-2P	T1C315/355-6P				
Fan Cover	FC											TC280										
Rain Cover	RFC											TC280										
End Shield (NE & NDE)	ES																					
End Shield (Drive End)	ESDE											TC250-2P	TC250-4/6P	TC280-2P	TC280-4/6P	TC315-2P	TC315-4/6P	TC355-2P	TC355-4/6P			
End Shield (Non-Drive End)	ESND											TC280		TC315			TC355					
Bearing Cover	BC											TC280		TC315			TC355					
Oil Seal	OS																					
B5 Flange	B5											TC250-2P	TC250-4/6P	TC280-2P	TC280-4/6P							
B14 Flange	B14																					
Removable Feet	RF																					

Forced cooling kit for cast iron motors

Forced cooling is recommended when the motor speed is below 25 Hz to compensate for the reduced cooling capacity of the motor at lower speeds.

Frame size	pole	frame	description	power (W)	phase	voltage	Hz
------------	------	-------	-------------	-----------	-------	---------	----

Three-phase forced cooling kits (Cast Iron Motors)

G-80C	2/4/6	80	forced cooling kit	37	3-ph	400	50
G-90C	2/4/6	90	forced cooling kit	45	3-ph	400	50
G-100C	2/4/6	100	forced cooling kit	72	3-ph	400	50
G-112C	2/4/6	112	forced cooling kit	85	3-ph	400	50
G-132C	2/4/6	132	forced cooling kit	50	3-ph	400	50
G-160C	2/4/6	132	forced cooling kit	60	3-ph	400	50
G-180C	2/4/6	180	forced cooling kit	80	3-ph	400	50
G-200C	2/4/6	200	forced cooling kit	110	3-ph	400	50
G-225C	2/4/6	225	forced cooling kit	170	3-ph	400	50
G-250C	2/4/6	250	forced cooling kit	200	3-ph	400	50
G-280C	2/4/6	280	forced cooling kit	200	3-ph	400	50
G-315C2P	2	315	forced cooling kit	350	3-ph	400	50
G-315C4/6P	4/6	315	forced cooling kit	350	3-ph	400	50
G-355C2P	2	355	forced cooling kit	280	3-ph	400	50
G-355C4/6P	4/6	355	forced cooling kit	280	3-ph	400	50

Modifications: Optional features

Available on request by special order. Contact us for assistance and a quotation.

Frame size

	71	80	90	100	112	132	160	180	200	225	250	280	315	355
IP65 Upgrade	-	-	-	-	-	*	*	*	*	*	*	*	*	*
Insulated NDE Bearing	-	-	-	-	-	-	*	*	*	*	*	*	STD	STD
Insulated DE Bearing	-	-	-	-	-	-	*	*	*	*	*	*	*	*
Thermistor	-	-	-	*	*	*	STD	STD	STD	STD	STD	STD	STD	STD
1x PT100 per Bearing	-	-	-	-	-	*	*	*	*	*	*	*	*	*
2x PT100 per Bearing	-	-	-	-	-	*	*	*	*	*	*	*	*	*
1x PT100 per Winding	-	-	-	-	-	*	*	*	*	*	*	*	*	*
2x PT100 per Winding	-	-	-	-	-	*	*	*	*	*	*	*	*	*
Space Heater	-	-	-	-	-	*	*	*	*	*	*	*	*	*



G-355C...



Terminal block



Terminal box



B14 Flange