

brace terminal (01069)



Description

Part No.: 01069

CRITO[®]

brace terminal

500 - 1000 mm²

terminal space 55 x 28

for busbars 30 x 10 and section busbars

System

60Classic

100Energy

185mm-System

centre feed unit

Product group 07

Subgroup 30

pack size 3

EAN 4021267010690

Advantages of the product

also rigid copper busbars can be connected if they are installed without mechanical tension

Katalogseite US US 2019 : 3.6, 3.7, 5.2, 5.3

eCl@ss 6.1 27141146

eCl@ss 7.1 27141146

ETIM 4.0 EC000001

ETIM 5.0 EC000001

Approvals

Standards

IEC 61439-1:2011

GB/T 7251.1

Approvals

UL



for UL feeder circuits >250V

type number: CPC50-L

UL file: E123577, UL category (for USA): NMTR <http://www.ul.com>

UL file: E123577, UL category (for Canada): NMTR7 <http://www.ul.com>

CCC approval: no certification required

Product data

Details IEC

Standards

IEC 61439-1:2011

GB/T 7251.1

Electrical data IEC

Rated current (IEC): 1600 A

rated voltage (IEC) AC: 690 V

The insulation performance of the article depends on the installation conditions.

rated short-time withstand current I_{CW} (1.0 s) max.: 26.1 kA

Supplementary data IEC

The following values have been verified with tests under certain conditions. Please ask Wöhner for this conditions before designing your panel.

max. permitted voltage (IEC) AC: 1000 V

max. permitted voltage (IEC) DC: 1500 V

current carrying capacity for end feed: 1600 A

current carrying capacity for centre feed: 2000 A

rated peak withstand current I_{pk} max.: 72.7 kA

Details UL

Standards

UL 508

for UL feeder circuits >250V

Electrical data UL

rated current (UL): 1200 A

rated voltage (UL) AC: 600 V

SCCR: 25 kA

Mechanical data

W x H x D: 72 x 50 x 85

weight: 50 kg/100

for busbars: 30 x 10 and section busbars

Material properties

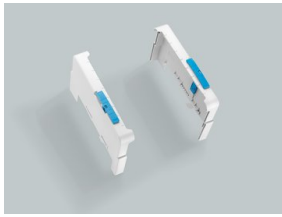
Connecting screws: Set screw M16, Allan key size 8

Terminal body: steel, galvanized and chromized

Reference

the terminal is able to connect flexible copper 32 x 10 in longitudinal direction

Accessories



01136

set of holders for cover sections, for 3-pole busbar systems
set consisting of left and right holder, for covers 01554, 01555 and 01417
for busbars: 12, 15, 20, 25, 30 x 5, 10 and section busbars



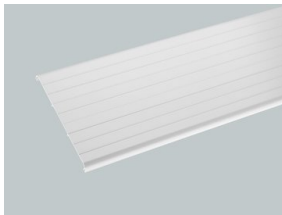
01137

set of holders for cover sections, for 4-pole busbar systems
set consisting of left and right holder, for covers 01599, 01555 and 01417
for busbars: 12, 15, 20, 25, 30 x 5, 10 and section busbars



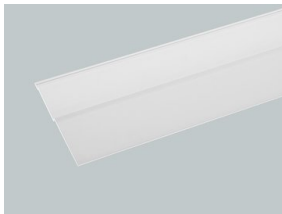
01539

cover cap, 3-pole
180 mm wide
180 x 200 x 90
for busbars: 12, 15, 20, 25, 30 x 5, 10 and section busbars



01554

compartment section, for 3-pole systems
front mounted, 1.10 m long, for holder 01136
3 x 190 x 1100



01555

cover section
top / bottom, 1.10 m long, for holders 01136 or 01137
3 x 109 x 1100



01596

cover cap, 3-pole
228 mm wide
228 x 200 x 90
for busbars: 12, 15, 20, 25, 30 x 5, 10 and section busbars

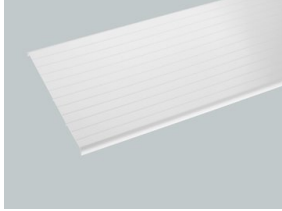
**01597**

cover cap, 4-pole

228 mm wide

228 x 260 x 90

for busbars: 12, 15, 20, 25, 30 x 5, 10 and section busbars

**01599**

front cover section, for 4-pole systems

front mounted, 1.10 m long, for holder 01137

3 x 250 x 1100