

in-line fuse switch-disconnector 160 A (33234)



Description

Part No.: 33234

in-line fuse switch-disconnector 160 A

screw M8 / clamp 70 mm²

size 00

for busbars 12, 15, 20, 25, 30 x 5, 10 and section busbars

System

60Classic

Product group 12

Subgroup 50

pack size 1

EAN 4021267332341

Advantages of the product

Self-closing inspection holes are available in the cover.

eCl@ss 6.1 27142108
eCl@ss 7.1 27142108
ETIM 4.0 EC001046
ETIM 5.0 EC001046

Approvals

Standards

IEC 60947-1:2007 + A1:2010 + A2:2014
IEC 60947-3:2008 + A1:2012 + A2:2015
GB/T 14048.3

Approvals

IEC (CB), CCC



type number: SLS-00

CCC certificate: 2004010302117261

Product data

for fuse-links size: NH 000, NH 00
fuse-link acc. to standard: IEC / HD 60269-2
permitted power dissipation of the fuse-link: 12 W

Details IEC

Standards

IEC 60947-1:2007 + A1:2010 + A2:2014
IEC 60947-3:2008 + A1:2012 + A2:2015
GB/T 14048.3

Electrical data IEC

Rated current (IEC): 160 A
rated voltage (IEC) AC: 690 V

rated isolation voltage U_i AC: 1000 V

rated surge voltage U_{imp} : 8 kV

Utilisation category AC (IEC 60947-3): AC-22B (690V)

AC-23B (400V)

AC-23B (500V/125A)

cond. short-circuit current with fuses (AC): 50 kA / 690 V

approved with fuse links of operation class: gG

power dissipation of the article:

The power dissipation at a typical load of 80% of the rated current results to 17.3 W.

(The power dissipation for operation with rated current would be 27 W.)

A fuse-combination unit acc. to IEC 60947-3 can only be operated at a higher voltage than its rated voltage, if it is used as a fuse-disconnector without breaking capacity, up to its max. rated insulation voltage and labelled as such.

for fuse links IEC 60269-2-1 (I) / DIN VDE 0636-201 size 00 up to 12W power dissipation

Degree of protection IP30 at front, degree of protection near terminal depends on installation

Mechanical data

W x H x D: 50 x 455 x 136

weight: 146 kg/100

for busbars: 12, 15, 20, 25, 30 x 5, 10 and section busbars

Type of fastening:

patented click mechanism, connection 70mm², screw M8, 12 - 14Nm torque,
connection

clamp 1.5-70mm², 3Nm torque, wedge clamp terminal 16-70mm², 3Nm torque

Terminal points

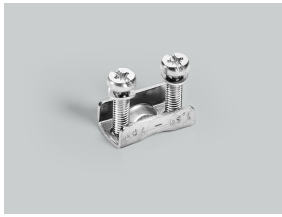
screw M8 :

Md 12 - 14 Nm

Material properties

Main body:	temperature stability 125°C, self-extinguishing in acc. to UL 94, creepage resistance CTI 200
Contacts:	spring-loaded copper contacts, silver plated
Shock protection cover:	temperature stability 125°C, self-extinguishing in acc. to UL 94, creepage resistance CTI 600, halogen-free
Handle:	temperature stability 125°C, self-extinguishing in acc. to UL 94, creepage resistance CTI 600, halogen-free

Accessories



03727
clamp connector
1.5 - 70 mm²
size 00



30894
M8 screw connector
with spring washer
size 00



33113
lateral cover support
for front covers
size 00 - 3



33156
pilot switch
changeover 250 V AC / 5 A, 30 V DC / 4 A



33224
prism terminal, single, for Cu and Al cables
16 - 70 mm²
NH 00