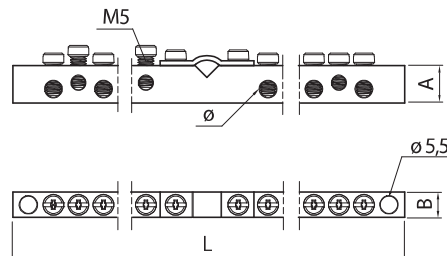
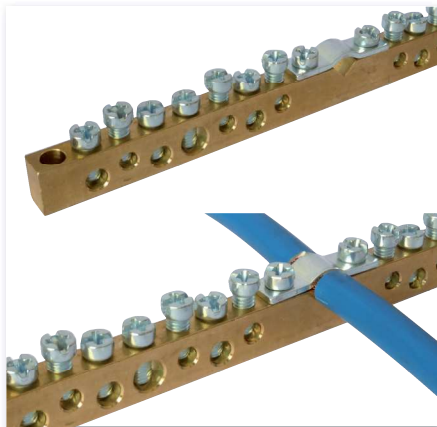


TECHNICAL FEATURES

Brass
Complete with galvanized steel screws
with cross head
1 meter long

EARTHING BARS

Code	Reference		Weight (Kg)	L (mm)	A (mm)	B (mm)	M	Ø holes (mm)	No. holes	Stripped wire (mm ²)	Wire with ferrule (mm ²)	(Nm)
MRS1501	MRS 9x6	10	0,380	1000	9	6	M4	5,2	113	2,5 ÷ 6	1,5 ÷ 6	2
MRS1506	MRS 12x8	10	0,774	1000	12	8	M5	6,5	116	2,5 ÷ 16	1,5 ÷ 10	3



TECHNICAL FEATURES

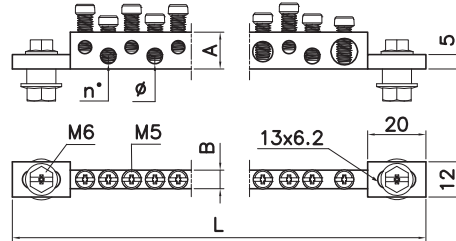
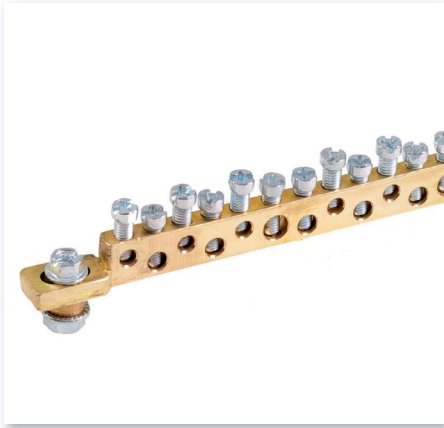
Material: brass.
Connection with cable collar up to 25 mm².
Ends with holes for easier fixing.
Complete with connection screws in galvanized steel.

EARTHING TERMINALS WITH CABLE COLLAR

Code	Reference		Weight (Kg)	L (mm)	AxB (mm)	n° inputs	Ø (mm)	n° holes	Stripped wire (mm ²)	Wire with ferrule (mm ²)	(Nm)
MRS4000	MRS 12X8-14	10	0,125	165	12x8	1	7,0	2	4 ÷ 16	2,5 ÷ 16	2
							5,3	6	2,5 ÷ 6	1,5 ÷ 6	1,5
							4,5	6	1,5 ÷ 4	0,75 ÷ 4	1,5
MRS4005	MRS 12X8-28	10	0,240	312	12x8	2	7,0	4	4 ÷ 16	2,5 ÷ 16	2
							5,3	12	2,5 ÷ 6	1,5 ÷ 6	1,5
							4,5	12	1,5 ÷ 4	0,75 ÷ 4	1,5
MRS4010	MRS 12X8-42	5	0,358	462	12x8	3	7,0	6	4 ÷ 16	2,5 ÷ 16	2
							5,3	18	2,5 ÷ 6	1,5 ÷ 6	1,5
							4,5	18	1,5 ÷ 4	0,75 ÷ 4	1,5

Earthing and Neutral terminals

BRASS TERMINALS

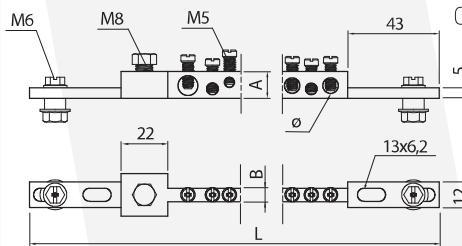


TECHNICAL FEATURES

Universal fixing:
 Direct Fixing, Fixing on Copper Bar,
 Fixing on Spacers and
 extension 2 connectors.
 High conductivity brass.
 Complete with fixings M6
 and connection screws M5
 in galvanized steel.

EARTHING TERMINALS

Code	Reference		Weight (Kg)	L (mm)	A (mm)	B (mm)	∅ holes (mm)	No. holes	Stripped wire (mm ²)	Wire with ferrule (mm ²)	(Nm)
MRS2000	MRS 13-6-20	1	0,165	215	13	6	9,1	1	16 ÷ 35	10 ÷ 35	2
							7,0	3	4 ÷ 16	2,5 ÷ 16	2
							5,3	8	2,5 ÷ 6	1,5 ÷ 6	1,5
							4,5	8	1,5 ÷ 4	0,75 ÷ 4	1,5
MRS5000	MRS 13-6-50	1	0,353	462	13	6	9,1	1	16 ÷ 35	10 ÷ 35	2
							7,0	6	4 ÷ 16	2,5 ÷ 16	2
							5,3	24	2,5 ÷ 6	1,5 ÷ 6	1,5
							4,5	19	1,5 ÷ 4	0,75 ÷ 4	1,5

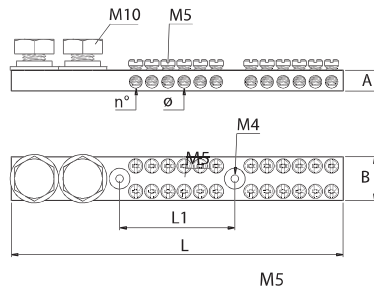


TECHNICAL FEATURES

Material: brass.
 Connection with cable lug up to 95mm²
 Universal fixing with 2 eyelet holes:
 Direct Fixing,
 Fixing on Copper Bar,
 Fixing on Spacers and
 extension 2 connectors.
 Complete with fixings and
 connection screws in galvanized steel.

EARTHING TERMINALS WITH CONNECTIONS FOR HOUSING

Code	Reference		Peso (Kg)	L (mm)	A (mm)	B (mm)	∅ holes (mm)	n° holes	Stripped wire (mm ²)	Wire with ferrule (mm ²)	(Nm)
MRS5002	MRS 13-6-41	1	0,350	462	13	6	9,1	1	16 ÷ 35	10 ÷ 35	2
							7,0	7	4 ÷ 16	2,5 ÷ 16	2
							5,3	19	2,5 ÷ 6	1,5 ÷ 6	1,5
							4,5	14	1,5 ÷ 4	0,75 ÷ 4	1,5
MRS5005	MRS 13-6-56	1	0,330	462	13	6	9,1	1	16 ÷ 35	10 ÷ 35	2
							7,0	1	4 ÷ 16	2,5 ÷ 16	2
							4,5	54	1,5 ÷ 4	0,75 ÷ 4	1,5

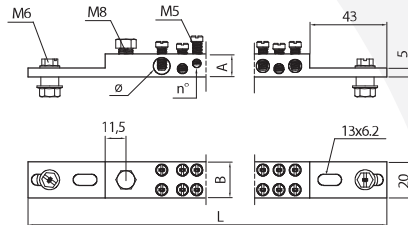


TECHNICAL FEATURES

Brass
double connection per hole
dual input up to 50 mm²
Complete with galvanized steel screws

DOUBLE CONNECTION TERMINALS

Code	Reference		Weight (Kg)	L (mm)	L1 (mm)	A (mm)	B (mm)	∅ holes (mm)	No. holes	Stripped wire (mm ²)	Wire with ferrule (mm ²)	(Nm)
MRS3000	MRS 2x6	10	0,170	102	50	9	19	5,5	6	2,5 ÷ 6	1,5 ÷ 6	2
MRS3005	MRS 2x12	10	0,215	144	50	9	19	5,5	12	2,5 ÷ 6	1,5 ÷ 6	2
MRS3010	MRS 2x24	10	0,326	230	120	9	19	5,5	24	2,5 ÷ 6	1,5 ÷ 6	2

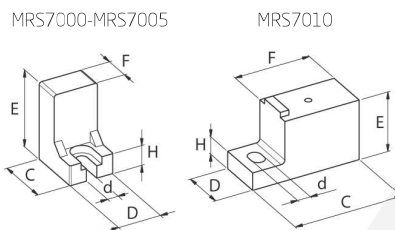
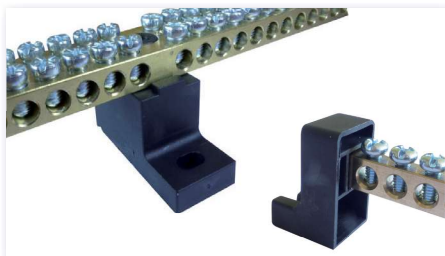


TECHNICAL FEATURES

High conductivity brass.
Two rows of connections with blind holes.
Connection with cable lug up to 95mm²
Universal fixing with oblong holes:
Direct Fixing, Fixing on
Copper Bar, Fixing on Spacers
and extension 2 connectors.
Complete with fixings M6
and connection screws M5
in galvanized steel.

DOUBLE EARTHING TERMINAL

Code	Reference		Weight (Kg)	L (mm)	A (mm)	B (mm)	∅ holes (mm)	No. holes	Stripped wire (mm ²)	Wire with ferrule (mm ²)	(Nm)
MRS3500	MRS 2X41	1	0,85	462	13	20	9,1	2X1	16 + 35	10 + 35	2
							7,0	2X7	4 ÷ 16	2,5 ÷ 16	2
							5,3	2X19	2,5 ÷ 6	1,5 ÷ 6	1,5
							4,5	2X14	1,5 ÷ 4	0,75 ÷ 4	1,5



TECHNICAL FEATURES

Polyamide 66
Self-extinguishing: V2-UL94
MRS7010: with screw fastening
the terminal

TERMINAL SUPPORTS

Code	Reference		Terminal cross-section A x B	C (mm)	D (mm)	E (mm)	F (mm)	H (mm)	d (mm)
MRS7000	MRS-S 9x6	50	9 x 6	22	17,5	31	11	8	4,2
MRS7005	MRS-S 12x8	50	12 x 8	22	17,5	31	11	8	4,2
MRS7010	MRS-S 9x19	50	9 x 19	44	19	24	30	7	5,2