

RU® file n° 300607

TECHNICAL FEATURES

Insulation:

Polyamide 66 reinforced
with 30% fiberglass

Halogen Free

Self-extinguishing: V0-UL94

Glow wire test: 960° C

Colour: Black

Threaded inserts:

Galvanized steel

Finished product:



Rated voltage: 1000 V AC/1500 V DC

Working temperature: -40÷130 °C

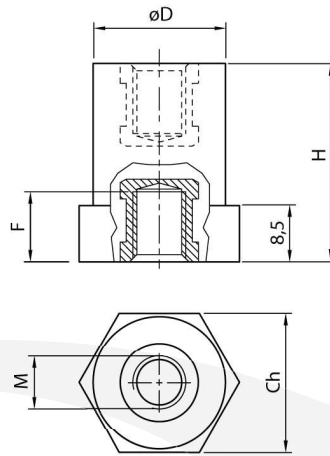
R.T. = Tensile strength

R.C. = Compressive strength

R.F. = Flexural strength

| Code | Reference |  | Weight (Kg) | H (mm) | Ch (mm) | Tipò | D (mm) | E (mm) | M | F (mm) |  (Nm) | R.T. (daN) | R.C. (daN) | R.F. (daN) |
|---------|---------------|---|-------------|--------|---------|------|--------|--------|-----|--------|--|------------|------------|------------|
| ISO2000 | ISO 15M4 UL | 50 | 0,005 | 15 | 14 | ○ | 12 | 3 | M4 | 5 | 3 | 150 | 1500 | 100 |
| ISO2005 | ISO 20M4 UL | 50 | 0,011 | 20 | 17 | ○ | 15 | 4 | M4 | 5 | 3 | 200 | 2000 | 100 |
| ISO2007 | ISO 20M5 UL | 50 | 0,011 | | | | | | M5 | 5 | 6 | 200 | 2000 | 150 |
| ISO2010 | ISO 20M6 UL | 50 | 0,011 | | | | | | M6 | 5 | 8 | 250 | 2000 | 200 |
| ISO2015 | ISO 25M5 UL | 50 | 0,013 | 25 | 20 | ○ | 15 | 5 | M5 | 8 | 6 | 400 | 2500 | 200 |
| ISO2020 | ISO 25M6 UL | 50 | 0,012 | | | | | | M6 | 8 | 10 | 400 | 2500 | 200 |
| ISO2025 | ISO 30M6 UL | 50 | 0,038 | 30 | 30 | ○ | 26 | 6 | M6 | 9 | 10 | 800 | 7500 | 500 |
| ISO2030 | ISO 30M8 UL | 50 | 0,035 | | | | | | M8 | 9 | 25 | 800 | 7500 | 500 |
| ISO2035 | ISO 35M6 UL | 50 | 0,049 | 35 | 32 | ○ | 28 | 7 | M6 | 11 | 10 | 900 | 6500 | 570 |
| ISO2040 | ISO 35M8 UL | 50 | 0,050 | | | | | | M8 | 11 | 25 | 900 | 6500 | 570 |
| ISO2045 | ISO 35M10 UL | 50 | 0,058 | | | | | | M10 | 11 | 50 | 900 | 6500 | 570 |
| ISO2046 | ISO 35M8W UL | 25 | 0,109 | 40 | 40 | ○ | 35 | 10 | M8 | 11 | 25 | 1100 | 11000 | 650 |
| ISO2048 | ISO 35M10W UL | 25 | 0,108 | | | | | | M10 | 11 | 50 | 1100 | 11000 | 650 |
| ISO2050 | ISO 40M6 UL | 25 | 0,056 | 40 | 32 | ○ | 28 | 8 | M6 | 11 | 10 | 1300 | 7500 | 500 |
| ISO2055 | ISO 40M8 UL | 25 | 0,065 | | | | | | M8 | 11 | 25 | 1300 | 7500 | 500 |
| ISO2060 | ISO 40M10 UL | 25 | 0,063 | | | | | | M10 | 11 | 50 | 1300 | 7500 | 500 |
| ISO2061 | ISO 40M8W UL | 25 | 0,108 | 46 | 46 | ○ | 40 | 12 | M8 | 11 | 25 | 1500 | 12000 | 600 |
| ISO2063 | ISO 40M10W UL | 25 | 0,108 | | | | | | M10 | 11 | 50 | 1500 | 12000 | 600 |
| ISO2065 | ISO 45M6 UL | 25 | 0,108 | 45 | 41 | ○ | 33 | 10 | M6 | 15 | 10 | 1600 | 9000 | 650 |
| ISO2070 | ISO 45M8 UL | 25 | 0,097 | | | | | | M8 | 15 | 25 | 1600 | 9000 | 650 |
| ISO2075 | ISO 45M10 UL | 25 | 0,097 | | | | | | M10 | 15 | 50 | 1800 | 9000 | 700 |
| ISO2076 | ISO 45M8W UL | 25 | 0,132 | 50 | 50 | ○ | 41 | 10,5 | M8 | 15 | 25 | 2000 | 14000 | 800 |
| ISO2078 | ISO 45M10W UL | 25 | 0,132 | | | | | | M10 | 15 | 50 | 2000 | 14000 | 800 |
| ISO2080 | ISO 50M6 UL | 25 | 0,094 | 50 | 36 | ○ | 29 | 11 | M6 | 15 | 10 | 1500 | 10000 | 400 |
| ISO2085 | ISO 50M8 UL | 25 | 0,096 | | | | | | M8 | 15 | 25 | 1600 | 10000 | 450 |
| ISO2090 | ISO 50M10 UL | 25 | 0,093 | | | | | | M10 | 15 | 50 | 1800 | 10000 | 650 |
| ISO2091 | ISO 50M10W UL | 25 | 0,145 | 50 | 50 | ○ | 40 | 12 | M10 | 15 | 50 | 2000 | 13000 | 750 |
| ISO2093 | ISO 50M12W UL | 25 | 0,145 | | | | | | M12 | 15 | 85 | 2000 | 13000 | 850 |
| ISO2094 | ISO 55M10 UL | 10 | 0,185 | 55 | 55 | ○ | 45 | 12 | M10 | 15 | 50 | 2200 | 15000 | 1000 |
| ISO2095 | ISO 60M8 UL | 10 | 0,194 | 60 | 54 | ○ | 42 | 12 | M8 | 15 | 25 | 2200 | 15000 | 900 |
| ISO2100 | ISO 60M10 UL | 10 | 0,190 | | | | | | M10 | 15 | 50 | 2200 | 15000 | 900 |
| ISO2101 | ISO 70M10 UL | 10 | 0,335 | 70 | 65 | ○ | 50 | 13 | M10 | 25 | 50 | 2200 | 18000 | 900 |
| ISO2103 | ISO 70M12 UL | 10 | 0,331 | | | | | | M12 | 25 | 85 | 2500 | 18000 | 1200 |
| ISO2105 | ISO 75M12 UL | 10 | 0,203 | 75 | 50 | ○ | 35 | 11,5 | M12 | 25 | 85 | 2000 | 12000 | 750 |
| ISO2110 | ISO 75M16 UL | 10 | 0,246 | | | | | | M16 | 25 | 200 | 2000 | 12000 | 750 |
| ISO2112 | ISO 80M12 UL | 10 | 0,370 | 80 | 65 | ○ | 50 | 14 | M12 | 25 | 85 | 2500 | 18000 | 1200 |
| ISO2115 | ISO 100M12 UL | 10 | 0,458 | 100 | 65 | ○ | 50 | 21 | M12 | 25 | 85 | 3000 | 20000 | 1000 |
| ISO2117 | ISO 100M16 UL | 10 | 0,430 | | | | | | M16 | 25 | 200 | 3000 | 20000 | 1000 |

Threaded studs for insulators cf. page 85



file n° 300607

TECHNICAL FEATURES

Insulation:

Polyamide 66 reinforced with 30% fiberglass
Halogen Free

Self-extinguishing: V0-UL94

Glow wire test: 960° C

Colour: Black

Threaded inserts:

Galvanized steel

Finished product:

Rated voltage: 1000 V AC/1500 V DC

Working temperature: -40÷130 °C

R.T. = Tensile strength

R.C. = Compressive strength

R.F. = Flexural strength

| Code | Reference | | Weight (Kg) | Ch (mm) | D (mm) | H (mm) | M | F (mm) | | R.T. (daN) | R.C. (daN) | R.F. (daN) |
|---------|-------------|----|-------------|---------|--------|--------|----|--------|------|------------|------------|------------|
| ISO2120 | CLN 16M4-20 | 50 | 0,014 | 21 | 20 | 16 | M4 | 5 | 3 | 200 | 4200 | 100 |
| ISO2125 | CLN 16M5-20 | 50 | 0,014 | | | | M5 | 5 | 6 | 300 | 4200 | 150 |
| ISO2130 | CLN 16M6-20 | 50 | 0,014 | | | | M6 | 5 | 6 | 350 | 4200 | 150 |
| ISO2135 | CLN 20M5-20 | 50 | 0,015 | | | 20 | M5 | 5 | 6 | 400 | 4500 | 200 |
| ISO2140 | CLN 20M6-20 | 50 | 0,015 | | | | M6 | 5 | 8 | 450 | 4500 | 280 |
| ISO2145 | CLN 25M4-20 | 50 | 0,016 | | | 25 | M4 | 5 | 3 | 300 | 4700 | 150 |
| ISO2150 | CLN 25M5-20 | 50 | 0,017 | | | | M5 | 5 | 6 | 400 | 4700 | 200 |
| ISO2155 | CLN 25M6-20 | 50 | 0,018 | | | | M6 | 5 | 8 | 550 | 4700 | 350 |
| ISO2160 | CLN 25M8-20 | 50 | 0,018 | | | 30 | M8 | 5 | 25 | 550 | 4700 | 350 |
| ISO2165 | CLN 30M5-20 | 50 | 0,027 | | | | M5 | 9 | 6 | 700 | 5000 | 370 |
| ISO2170 | CLN 30M6-20 | 50 | 0,026 | | | | M6 | 9 | 10 | 700 | 5000 | 370 |
| ISO2175 | CLN 30M8-20 | 50 | 0,024 | | | 35 | M8 | 9 | 25 | 700 | 5000 | 370 |
| ISO2180 | CLN 35M5-20 | 50 | 0,030 | | | | M5 | 9 | 6 | 700 | 5000 | 350 |
| ISO2185 | CLN 35M6-20 | 50 | 0,029 | | | | M6 | 9 | 10 | 800 | 5000 | 350 |
| ISO2190 | CLN 35M8-20 | 50 | 0,026 | | | 40 | M8 | 9 | 25 | 800 | 5000 | 350 |
| ISO2195 | CLN 40M5-20 | 50 | 0,030 | | | | M5 | 9 | 6 | 800 | 5000 | 300 |
| ISO2200 | CLN 40M6-20 | 50 | 0,030 | | | | M6 | 9 | 10 | 800 | 5000 | 300 |
| ISO2205 | CLN 40M8-20 | 50 | 0,028 | | | 45 | M8 | 9 | 25 | 800 | 5000 | 300 |
| ISO2210 | CLN 45M5-20 | 25 | 0,033 | | | | M5 | 9 | 6 | 800 | 4700 | 260 |
| ISO2215 | CLN 45M6-20 | 25 | 0,031 | | | | M6 | 9 | 10 | 800 | 4700 | 260 |
| ISO2220 | CLN 45M8-20 | 25 | 0,030 | 50 | M8 | 9 | 25 | 800 | 4700 | 260 | | |
| ISO2225 | CLN 50M5-20 | 25 | 0,032 | | M5 | 9 | 6 | 800 | 4500 | 220 | | |
| ISO2230 | CLN 50M6-20 | 25 | 0,034 | | M6 | 9 | 10 | 800 | 4500 | 220 | | |
| ISO2235 | CLN 50M8-20 | 25 | 0,033 | 30 | 30 | 30 | M6 | 11 | 10 | 1000 | 7000 | 500 |
| ISO2240 | CLN 30M6-30 | 50 | 0,039 | | | | M8 | 11 | 25 | 1200 | 8000 | 550 |
| ISO2245 | CLN 30M8-30 | 50 | 0,037 | | | 35 | M6 | 11 | 10 | 1100 | 7500 | 500 |
| ISO2250 | CLN 35M6-30 | 50 | 0,041 | M8 | 11 | | 25 | 1400 | 8500 | 550 | | |
| ISO2255 | CLN 35M8-30 | 50 | 0,039 | 40 | M6 | 11 | 10 | 1100 | 7500 | 450 | | |
| ISO2260 | CLN 40M6-30 | 25 | 0,061 | | M8 | 11 | 25 | 1400 | 8500 | 480 | | |
| ISO2265 | CLN 40M8-30 | 25 | 0,061 | 45 | M6 | 15 | 10 | 1200 | 9000 | 420 | | |
| ISO2270 | CLN 45M6-30 | 25 | 0,082 | | M8 | 15 | 25 | 1600 | 9000 | 420 | | |
| ISO2275 | CLN 45M8-30 | 25 | 0,078 | 50 | M6 | 15 | 10 | 1200 | 8000 | 380 | | |
| ISO2280 | CLN 50M6-30 | 25 | 0,087 | | M8 | 15 | 25 | 1600 | 8000 | 380 | | |
| ISO2285 | CLN 50M8-30 | 25 | 0,083 | 55 | M6 | 15 | 10 | 1100 | 7500 | 350 | | |
| ISO2290 | CLN 55M6-30 | 25 | 0,094 | | M8 | 15 | 25 | 1300 | 7500 | 350 | | |
| ISO2295 | CLN 55M8-30 | 25 | 0,091 | 65 | M6 | 15 | 10 | 950 | 7000 | 300 | | |
| ISO2300 | CLN 65M6-30 | 25 | 0,104 | | M8 | 15 | 25 | 950 | 7000 | 300 | | |
| ISO2305 | CLN 65M8-30 | 25 | 0,104 | 70 | M6 | 15 | 10 | 900 | 6500 | 280 | | |
| ISO2310 | CLN 70M6-30 | 25 | 0,109 | | M8 | 15 | 25 | 900 | 6500 | 280 | | |
| ISO2315 | CLN 70M8-30 | 25 | 0,098 | | | | | | | | | |