

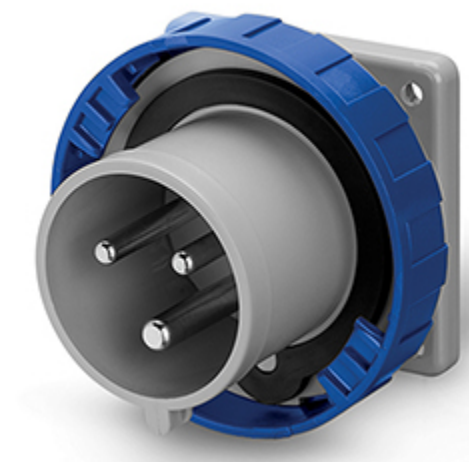
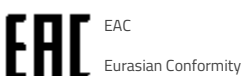
**248.3293**

## FLUSH MOUNTING APPLIANCE INLET

32A 2P+E 6h 200-250V 50Hz 60Hz 75X75MM

Screw terminals

Product Approvals



TECHDATA		STANDARDS AND LAWS	
Type of product	FLUSH MOUNTING APPLIANCE INLET	EN 60309-1 (1999)	[European Standard] Plugs, socket-outlets and couplers for industrial purposes. Part 1: General requirements
Commercial series	OPTIMA Series	EN 60309-2 (1999)	[European Standard] Plugs, socket-outlets and couplers for industrial purposes. Part 2: Dimensional interchangeability requirements for pin and contact-tube accessories of harmonized configurations
Synthetical description	FLUSH MOUNTING APPLIANCE INLET		
Mounting version	FLUSH MOUNTING	DIRECTIVE LOW VOLTAGE 2014/35 /UE	[European Directives] Low Voltage Directive
Rated current	32A		
Poles	2P+E		
Hour position	6h		
Rated voltage (range)	200-250V		
Rated voltage	200-250V		
Working frequency	60Hz		
Working frequency	50Hz		
Colour	BLUE		
Protection degree	Watertight		
Protection degree IP	IP66/IP67/IP69		
Types of available outlets	STRAIGHT		

Terminals	Screw terminals
Flange	75X75MM