



Power contactor
BF26

Product designation

Product type designation

Contact characteristics

Number of poles	nr.	4
Rated insulation voltage U _i	V	690
Rated impulse withstand voltage U _{imp}	kV	6
Operating frequency		
	Operational frequency min	Hz 25
	Operational frequency max	Hz 400
Conventional free air thermal current I _{th}	A	45
Operating current		
	Operational current AC1 (≤40°C)	A 45
	Operational current AC3 (≤440V ≤55°C)	A 26
	Operational current AC4 (400V)	A 11.5
Rated operational power AC1 (T≤40°C)		
	230V	kW 17
	400V	kW 30
	500V	kW 37
	690V	kW 51
Short-time allowable current for 10s (IEC/EN60947-1)	A	210
Protection fuse		
	gG (IEC)	A 50
	aM (IEC)	A 32
Making capacity (RMS value)	A	260
Breaking capacity at voltage		
	Breaking capacity 440V	A 208
	Breaking capacity 500V	A 184
	Breaking capacity 690V	A 168
Resistance per pole (average value)	mΩ	2
Power dissipation per pole (average value)		
	Power dissipation pole (average value) I _{th}	W 4
	AC3	W 1.4
Tightening torque for terminals		
	min	Nm 2.5
	max	Nm 3
	min	lbft 1.8
	max	lbft 2.2
Tightening torque for coil terminal		
	min	Nm 0.8
	max	Nm 1
	min	lbft 0.8
	max	lbft 0.74
max number of wires simultaneously connectable	nr.	2
Conductor section		

AWG

	min		14
	max		6
Flexible w/o lug conductor section			
	min	mm ²	2.5
	max	mm ²	16
Flexible c/w lug conductor section			
	min	mm ²	1
	max	mm ²	10
Flexible with insulated spade lug conductor section			
	min	mm ²	1
	max	mm ²	10
Power terminal protection according to IEC/EN 60529			IP20 when wired
Auxiliary contact characteristics			
Operational current AC1 (≤40°C)		A	45
Operating current DC13			
	110V	A	Screw / DIN rail 35mm
Ambient conditions			
Temperature			
Operating temperature			
	min	°C	-50
	max	°C	70
Storage temperature			
	min	°C	-60
	max	°C	80
Max altitude		m	3000
Operating position			
	normal allowable		Vertical plan ±30°
Mounting			Screw / DIN rail 35mm
Weight		g	0.66
Operations			
Mechanical life		Cycles	20000000
Electrical life		Cycles	1600000
Safety related data			
Performance level B10d according to EN/ISO 13489-1			
	rated load	Cicli	1600000
	mechanical load	Cicli	20000000
EMC compatibility			yes
DC coil operating			
DC rated control voltage			
	min	V	6
DC operating voltage			
pick-up			
	min	%Us	0.7
	max	%Us	1.25
drop-out			
	min	%Us	0.1
	max	%Us	0.40
Average coil consuption ≤20°C			
	in-rush	W	5.4
	holding	W	5.4

Max cycles frequency

Mechanical operations Cycles/h 3600

Operating times

Average time for Us control

in AC

Closing NO

min	ms	8
max	ms	24

Opening NO

min	ms	5
max	ms	15

in DC

Closing NO

min	ms	54
max	ms	66

Opening NO

min	ms	14
max	ms	17

Closing NC

min	ms	23
max	ms	28

Opening NC

min	ms	46
max	ms	56

UL technical data

Full-load current (FLA) for three-phase AC motor

at 480V	A	21
at 600V	A	22

General USE

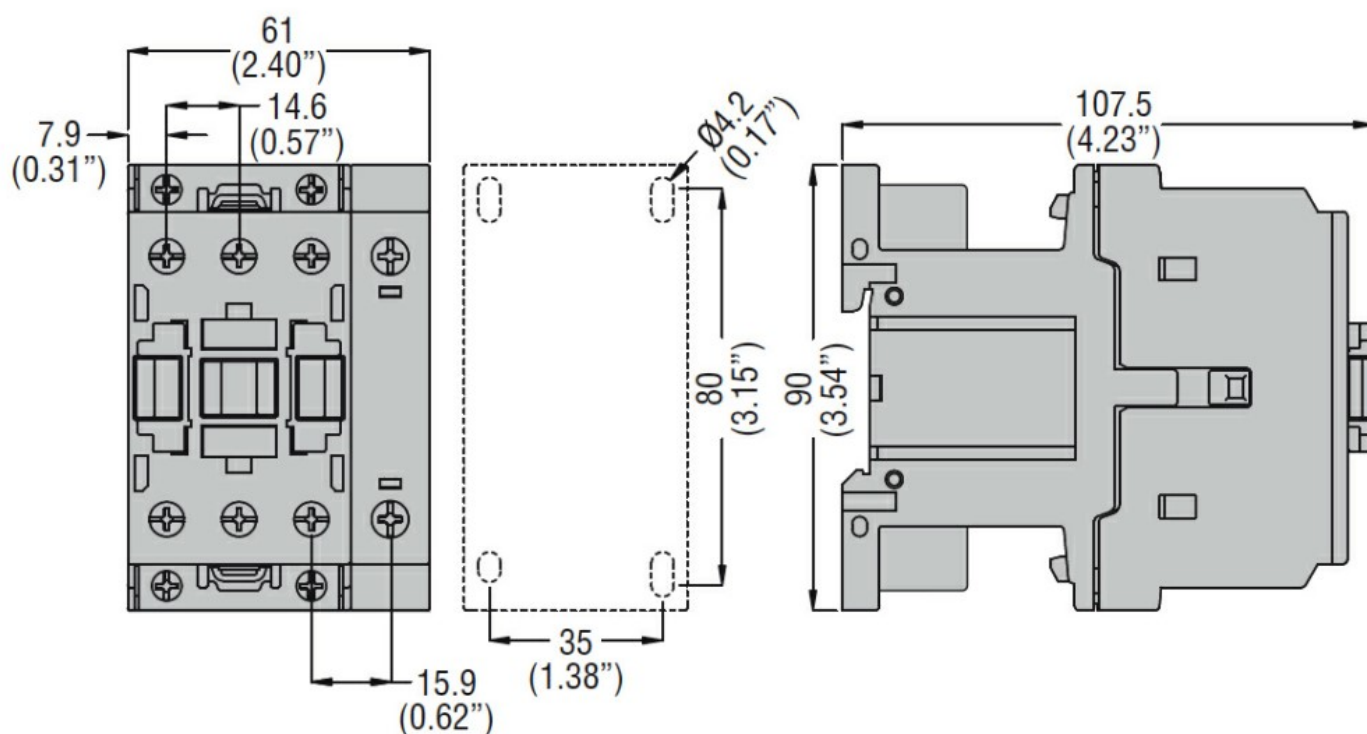
Contactor

AC current	A	32
------------	---	----

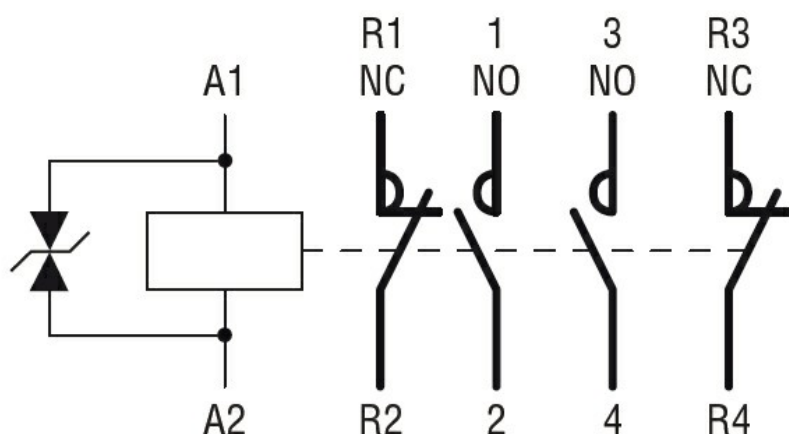
Other features

Pollution degree 3

Dimensions



Wiring diagrams



Certifications and compliance

Certifications

CSA C22.2 n° 60947-1

CSA C22.2 n° 60947-4-1

IEC/EN 60947-1

IEC/EN 60947-4-1

UL 60947-1

UL 60947-4-1

Compliance

CCC

cULus

EAC

ETIM 6 classification

EC000066 - Power contactor, AC switching