



Product designation

RFE45

Product type designation

Motor protection  
relay

### General characteristics

Number of poles	nr.	3
Overvoltage category		III
Pollution degree		3
Frontal IP degree		IP20
Type of release		Electronic thermal
Protection fuse		
	gG (IEC)	A 6
	aM (IEC)	A 4
Phase failure detection		yes
Reset mode		Manual or automatic

### Power circuit characteristics

Rated insulation voltage Ui	V	1000
Rated impulse withstand voltage Uimp	kV	6
Rated operational voltage	V	690
Operating frequency		
	Operational frequency min	Hz 50
	Operational frequency max	Hz 60
Operating current		
	Operational current min	A 0.4
	Operational current max	A 2
Tripping class		5 - 10 - 20 - 30
Test Button		yes
Trip indicator		yes

Terminals

type	Screw and washer
screw	M4
width	12
tool	Phillips 2

Tightening torque for terminals

min	Nm	3.1
max	Nm	3.1
min	lbft	2.3
max	lbft	2.3

Conductor section

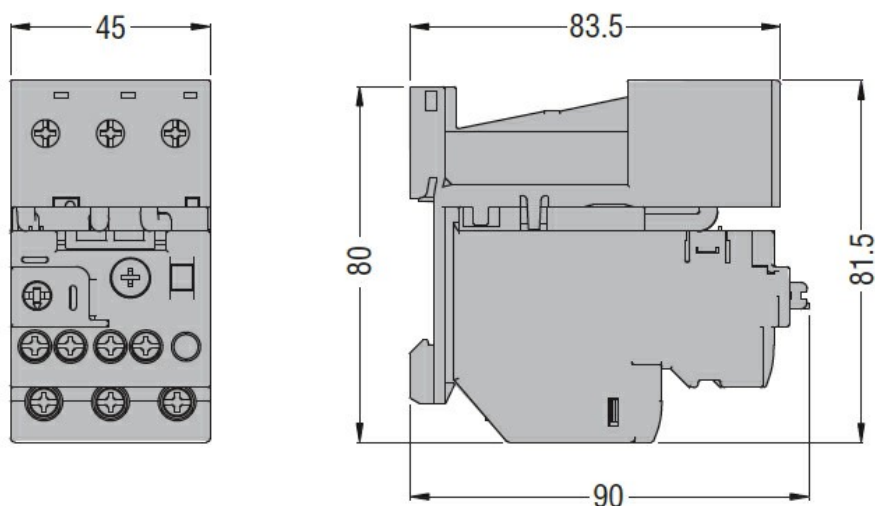
AWG max	6
---------	---

### Auxiliary circuit characteristics

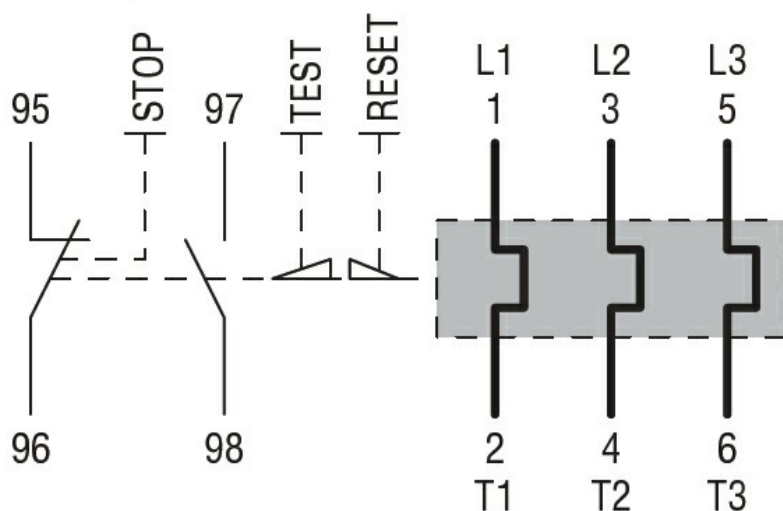
Auxiliary contacts

NO	nr.	1
----	-----	---

	NC	nr.	1
Rated insulation voltage Ui		V	690
Rated impulse withstand voltage Uimp		kV	6
Rated operational voltage		V	690
Operating current AC15	24V	A	3
	120V	A	3
	240V	A	1.5
	380V	A	0.95
	480V	A	0.75
	500V	A	0.72
	600V	A	0.6
Operating current DC13	125V	A	0.11
	600V	A	0.22
Conventional free air thermal current Ith		A	10
Terminals	type		Screw and washer
	screw		M3,5
	width	mm	7
	tool		Phillips 2
Conductor section	Flexible w/o lug max	mm <sup>2</sup>	2.5
	Flexible c/w lug max	mm <sup>2</sup>	2.5
Tightening torque for terminals	min	Nm	0.8
	max	Nm	0.8
	min	lbft	0.6
	max	lbft	0.6
UL/CSA and IEC/EN 60947-5-1 designation			B600-R300
Ambient conditions			
Operating temperature	min	°C	-25
	max	°C	70
Storage temperature	min	°C	-55
	max	°C	80
Compensation temperature	min	°C	-25
	max	°C	70
Max altitude		m	3000
Mechanical features			
Operating position	normal		Vertical plan
	allowable		±30°
Weight		g	195
UL technical data			
Full-load current (FLA) for three-phase AC motor	at 480V	A	2
	at 600V	A	2
Dimensions			



### Wiring diagrams



### Certifications and compliance

#### Compliance

CSA C22.2 n° 60947-1
CSA C22.2 n° 60947-4-1
IEC/EN 60947-1; IEC/EN 60947-4-1
UL 60947-1
UL 60947-4-1

#### Certifications

cULus